

mitsubishi MELSEC-Q Ethernet

MITSUBISHI Q series, MELSEC-Q protocol application to CPU of Ethernet interface or Ethernet module.

<http://www.mitsubishi-automation.com>

HMI Setting:

Parameters	Recommend	Option	Notes
PLC type	MITSUBISHI MELSEC-Q		
Com port	Ethernet		
PLC Station No.	It must same as the PLC setting	0~255	Q13UDEH has to set 255
Parameter1	Networking no. (must the same as PLC setting)	0~255	Q13UDEH has to set 0
TCP/IP port	It must same as the PLC setting		Advice to set port no.: 4999

Device address:

Bit/Word	Device Type	Format	Range	Memo
B	SM	dddd	0 ~ 2047	Special Relay
B	X	hhhh	0 ~ 1FFF	Input Relay
B	Y	hhhh	0 ~ 1FFF	Output Relay
B	M	dddd	0 ~ 8191	Internal Relay
B	L	dddd	0 ~ 8191	Latch Relay
B	F	dddd	0 ~ 2047	Annunciator
B	V	dddd	0 ~ 2047	Edge Relay
B	B	hhhh	0 ~ 1FFF	Link Relay
B	TS	dddd	0 ~ 2047	Timer Contact
B	TC	dddd	0 ~ 2047	Timer Coil
B	SS	dddd	0 ~ 2047	Retentive Timer Contact
B	SC	dddd	0 ~ 2047	Retentive Timer Coil
B	CS	dddd	0 ~ 1023	Counter Contact
B	CC	dddd	0 ~ 1023	Counter Coil
B	SB	hhh	0 ~ 7FF	Special Link Relay
B	S	dddd	0 ~ 8191	Step relay
B	DX	hhhh	0 ~ 1FFF	Direct Input
B	DY	hhhh	0 ~ 1FFF	Direct Output
W	SD	dddd	0 ~ 2047	Special register

W	D	dddd	0 ~ 12287	Data Register
W	W	hhhh	0 ~ 1FFF	Link Register
W	TN	dddd	0 ~ 2047	Timer Current value
W	SN	dddd	0 ~ 2047	Retentive Timer Current value
W	CN	dddd	0 ~ 1023	Counter Current value
W	SW	hhh	0 ~ 7FF	Special Link Register
W	Z	dd	0 ~ 15	Index Register
W	R	dddd	0 ~ 32767	File Register
W	ZR	hhhhh	0 ~ FE7FF	File Register

Note: ddd: Decimal, hhh: Hexadecimal, ooo: Octal.

Every model of CPU is different, we suggest user to refer to MITSUBISHI MELSEC-Q manual's Device List.

Wiring diagram:

Ethernet:

MT8000 Ethernet Wire color
RJ45

Ethernet Hub or
Switch RJ45

1	TX+	White/Orange	—————	1	RX+
2	TX-	Orange	—————	2	RX-
3	RX+	White/Green	—————	3	TX+
4	BD4+	Blue	—————	4	BD4+
5	BD4-	White/Blue	—————	5	BD4-
6	RX-	Green	—————	6	TX-
7	BD3+	White/Brown	—————	7	BD3+
8	BD3-	Brown	—————	8	BD3-

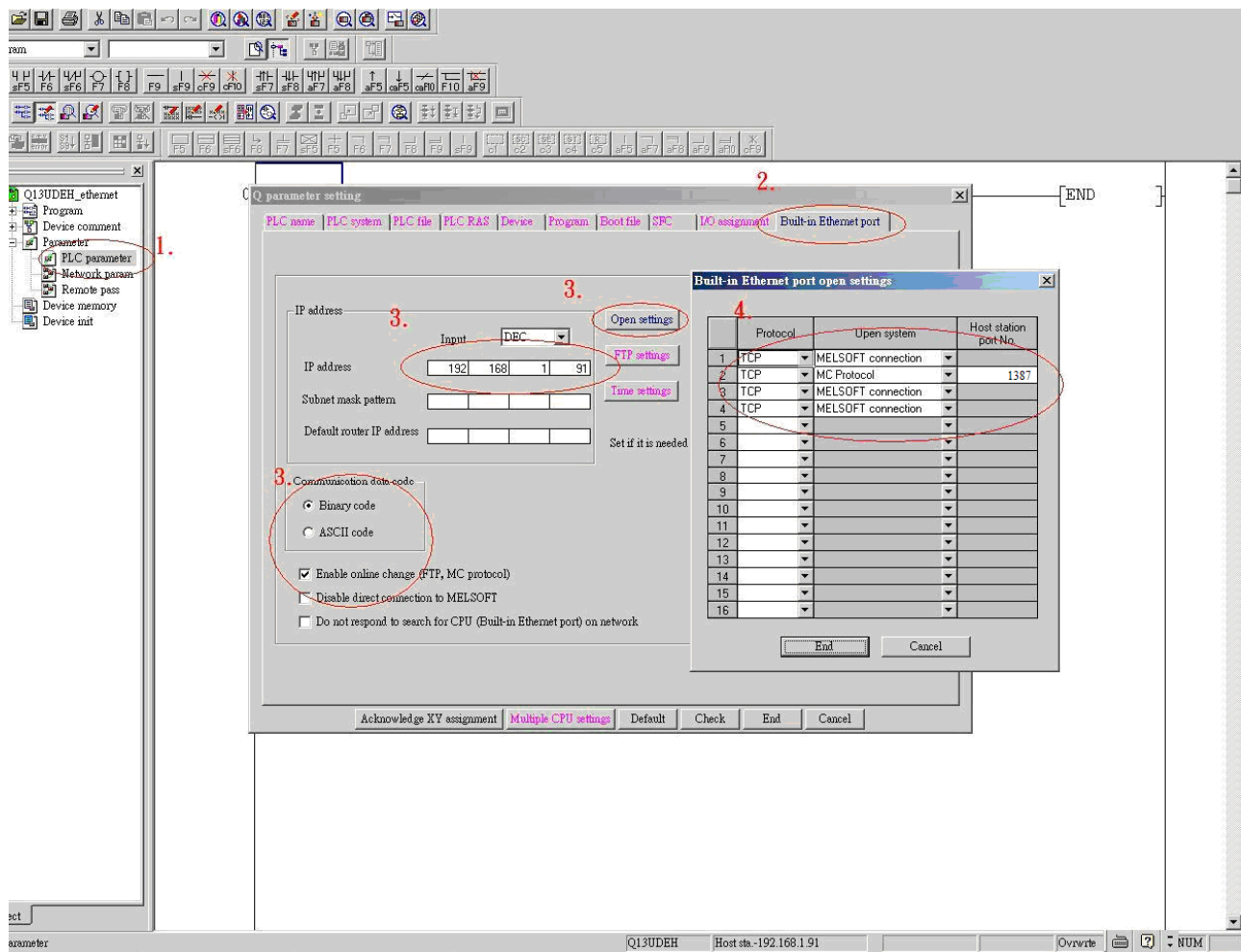
Ethernet: Direct connect (crossover cable)

MT8000 Ethernet Wire color
RJ45

Modbus TCP Device
RJ45

1	TX+	White/Orange	—————	3	RX+
2	TX-	Orange	—————	6	RX-
3	RX+	White/Green	—————	1	TX+
4	BD4+	Blue	—————	4	BD4+
5	BD4-	White/Blue	—————	5	BD4-
6	RX-	Green	—————	2	TX-
7	BD3+	White/Brown	—————	7	BD3+
8	BD3-	Brown	—————	8	BD3-

MITSUBISHI Q series Ethernet module setting:



1. Click PLC parameter
2. Built-in Ethernet port.
3. Click Open settings and then set the IP address and communication data code
4. Set the MC protocol-TCP Port No..